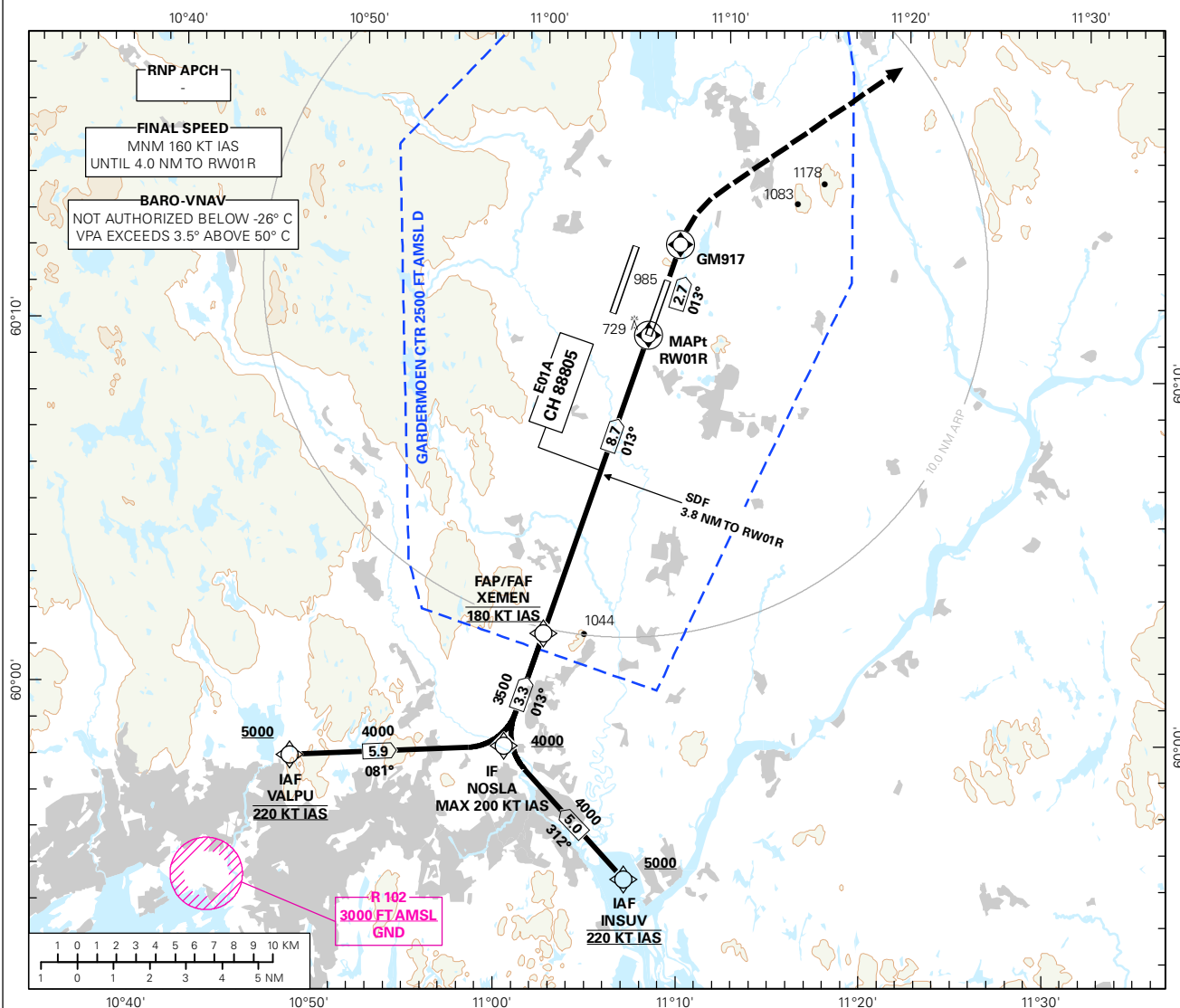


INSTRUMENT APPROACH CHART - ICAO PLAN VIEW SCALE: 1:350 000

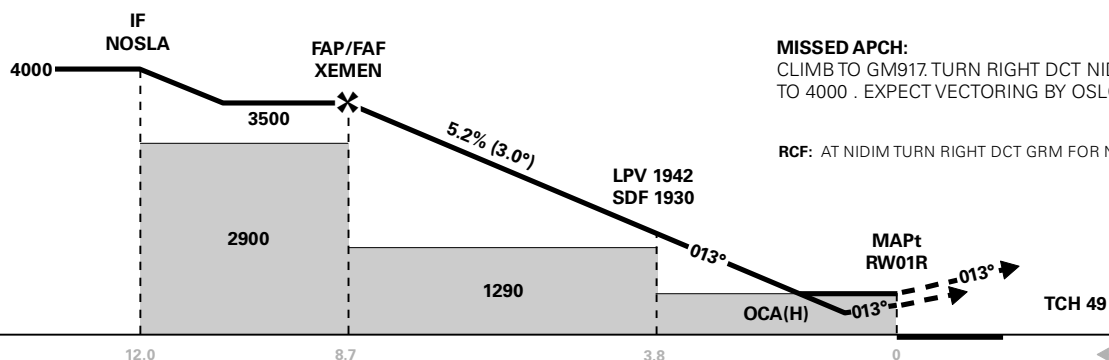
OSLO

GARDERMOEN**RNAV(GNSS) RWY 01R****TRANSITION ALTITUDE
7000**

<div style="border: 1px solid black; border-radius: 50%; width: 60px; height: 60px; display: flex; align-items: center; justify-content: center; margin: 0 auto;"> <div style="font-size: 24px; font-weight: bold;">3₉</div> </div> <div style="text-align: center; margin-top: 5px;">MSA 25 NM ARP</div>	ATIS: 126.125	AD ELEV: 681		
	APP: 118.475 120.450	THR ELEV: 670	DIST IN NM	
	DIR: 136.400 (119.975)	HGT RELATED TO THR RWY 01R	ELEV, ALT AND HGT IN FT	
	FIN: 128.900	CIRCLING HGT RELATED TO AD ELEV		
	TWR: 120.100 (123.325)	BEARINGS ARE MAGNETIC - VAR 2.8 ° E (2015)		
	GND: 121.900			



DIST TO RW01R	9	8	7	6	5	4	3	2
ALT (HGT)	-	3270 (2600)	2950 (2280)	2640 (1970)	2320 (1650)	2000 (1330)	1680 (1010)	1360 (690)



CAT OF ACFT		A	B	C	D	FINAL APCH	DIST FAF - MAPt: 8.7					
OCA(H) STRAIGHT - IN	LPV	880 (210)	890 (220)	900 (230)	910 (240)		SPEED	KT	70	90	120	150
	LNAV/VNAV	970 (300)	990 (320)	1010 (340)	1030 (360)	07:30		05:50	04:22	03:30	02:55	
		LNAV	1230 (560)				TIME	MIN:SEC				
CIRCLING		1280 (599)		1530 (849)	1630 (949)	ROD	FT/MIN	370	480	635	795	955

NOTE: CIRCLING E OF RWY ONLY.

CHANGES: SPEED RESTRICTIONS.

Avinor

17 SEP 2015

RECOMMENDED RNAV PROCEDURE CODING

ENGM RNAV(GNSS) RWY 01R										
Serial Number	Path Descriptor	Waypoint Identifier	Fly-over	Course °M(°T)	MAG VAR	DIST (NM)	Turn Dir	ALT (FT)	Speed (KT)	VPA/TCH
010	IF	INSUV	-	-	-	-	-	A5000+	K220	-
020	TF	NOSLA	-	312 (314.9)	-	5.0	-	A4000+	K200-	-
010	IF	VALPU	-	-	-	-	-	A5000+	K220	-
020	TF	NOSLA	-	081 (084.1)	-	5.9	-	A4000+	K200-	-
030	TF	XEMEN	-	013 (015.9)	-	3.3	-	A3500+	K180	-
040	TF	RW01R	Y	013 (016.0)	-	8.7	-	-	-	-3.0/15
050	TF	GM917	Y	013 (016.0)	-	2.7	-	-	-	-
060	DF	NIDIM	-	-	-	-	-	A4000	-	-

Note: Recommended RNAV procedure coding is based on ARINC 424-15 and is provided solely to indicate which procedure design protection areas were used in the Instrument Flight Procedure Design process.

Note: Published OCA(H) values are obstacle clearance values. Decision heights (DH) below 250 FT shall not be used due to APV approach operation Type A limitations.

FAS DATA BLOCK

Operation type	0	LTP/FTP ellipsoidal height	242.6
SBAS Provider	1	FPAP latitude	601208.4170N
Airport Identifier	ENGM	FPAP longitude	0110723.3005E
Runway	RW01R	Threshold crossing height	15
Approach performance designator	0	TCH units	M
Route Indicator	-	Glide path angle	3.0
Reference path data selector	0	Course width at threshold	105
Reference path Identifier	E01A	Length offset	136
LTP/FTP latitude	601032.7195N	Horizontal alert limit (HAL)	40
LTP/FTP longitude	0110628.0150E	Vertical alert limit (VAL)	50
	PRECISION APPROACH PATH CRC REMAINDER		2A55D9A0

NON FAS DATA BLOCK FIELDS

LTP Ortometric Height	204.2
FPAP Ortometric Height	207.6